

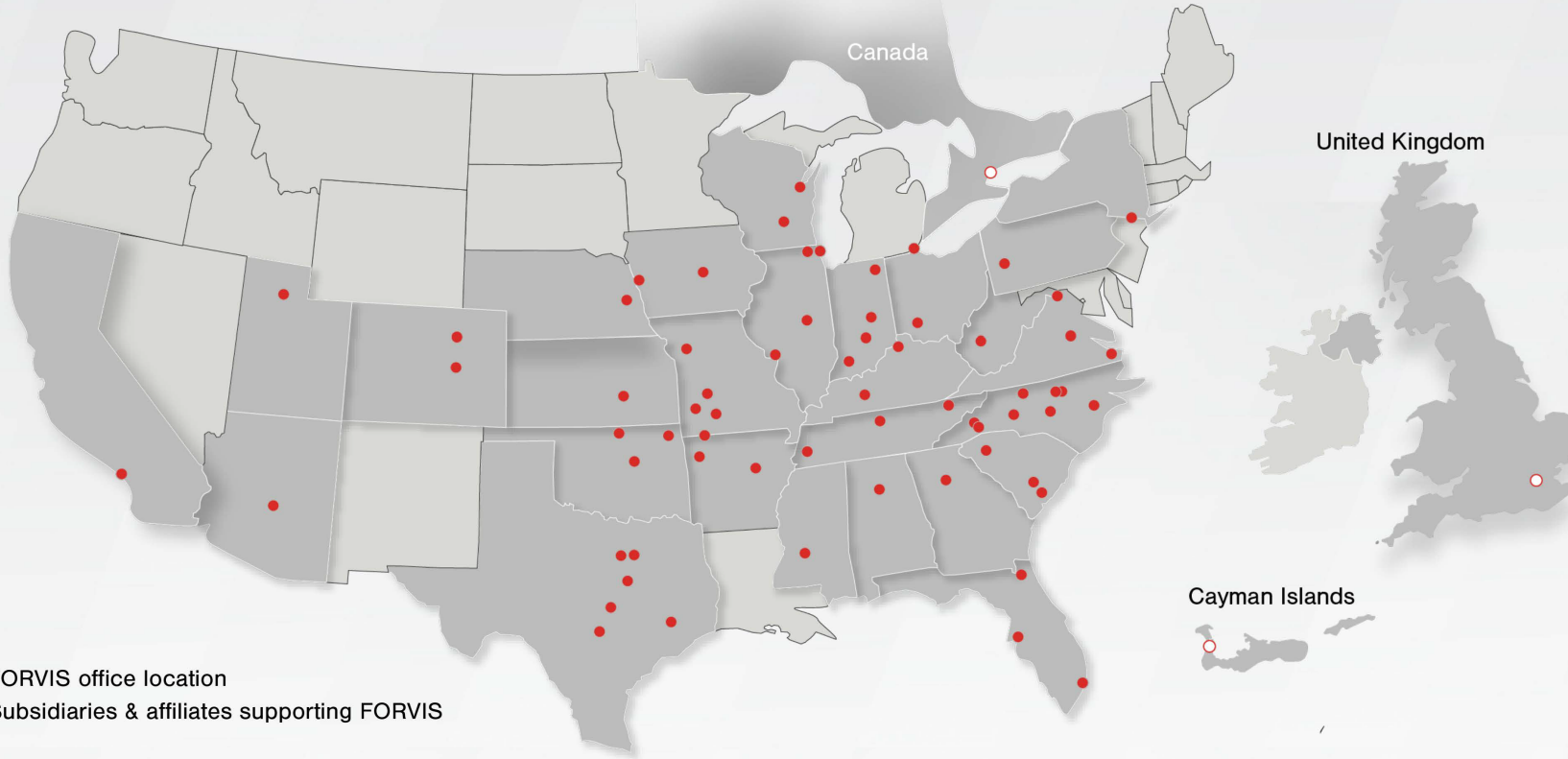
# FORVIS<sup>®</sup>

Business Technology Solutions

## Streamline Manufacturing & Distribution Reporting & Planning

March 28, 2024

# Global Presence & Reach



- FORVIS office location
- Subsidiaries & affiliates supporting FORVIS

## Subsidiaries & Affiliates Supporting FORVIS

- FORVIS Capital Advisors, LLC
- FORVIS Global Advisory Canada ULC\*\*
- TALENT SHIFT, LLC
- FORVIS Wealth Advisors, LLC
- FORVIS Global Advisory Ltd. UK\*\*

**FORVIS**

## By the Numbers

**Top 10**  
U.S. Public Accounting Firm \*

**27**  
States + Canada, U.K., & \*\*  
Cayman Islands

**10+**  
Industries

**68**  
Markets

**500+**  
Partners & Principals

**6,000+**  
Team Members



FORVIS is a member of Praxity™, an international alliance of independent accounting firms that offers multinational clients access to resources around the world.

# Business Technology Solutions

**FORVIS** provides enterprise resource planning (ERP) and customer relationship management (CRM) platform analysis, design, implementation, upgrade, training, and support services.

In addition, our Insights & Automation services include business intelligence (BI), robotic process automation (RPA), assessments, implementations, and training.



We are an award-winning partner of Solver Global, which itself is highly rated by G2, a leading software marketplace.

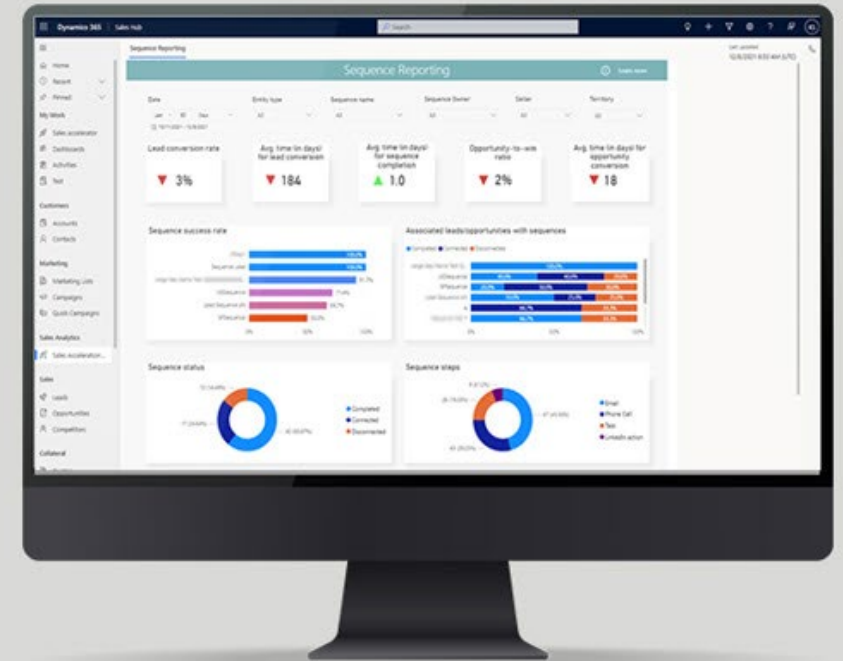
## FORVIS

Microsoft  
Partner

Sage Partner

ORACLE  
NETSUITE  
Solution Provider

salesforce  
PARTNER



From sales forecasting to financial reporting,  
learn what CRM and ERP technologies can do.

# Presenter



**Charles Allen**  
Senior Managing Consultant

713.499.4629  
charles.allen@forvis.com

---



# FORVIS<sup>®</sup>

Business Technology Solutions

## Streamline Manufacturing & Distribution Reporting & Planning

March 28, 2024

# Objectives

- Describe how data from multiple systems can be combined for reporting & planning
- Demonstrate how reports can be created for different areas of the organization
- Discuss how planning can be used across the organization for budgets & forecasts

# Agenda

● Overview

---

● Reporting

---

● Planning

---

● Dashboards

# Overview

---

**FORV/S**

FORVIS is a trademark of FORVIS, LLP, registered with the U.S. Patent and Trademark Office.

# Types of Reports Used by Manufacturers



Informational



Analytic



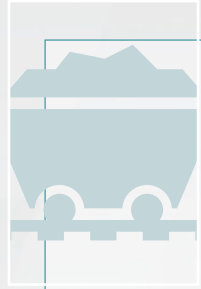
Statutory



Voluntary



# Planning Needs in M&D



Materials



Personnel



Sales



Projects



Capital  
Requirements

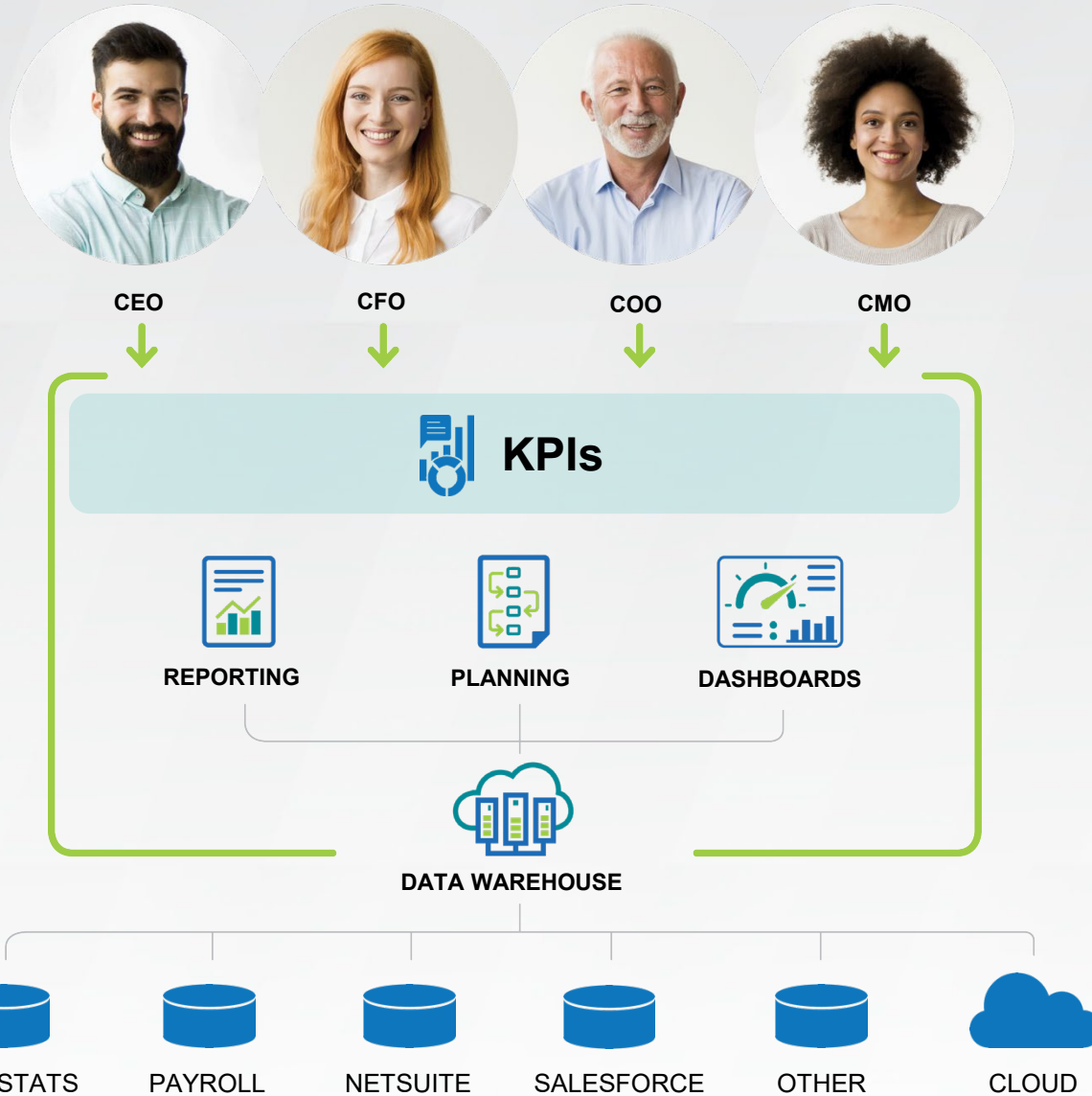
# Reporting

---

**FORV/S**

FORVIS is a trademark of FORVIS, LLP, registered with the U.S. Patent and Trademark Office.

Solver can provide key insights across the organization.



# Complete Insight ...

## Faster, Better Decisions

### Key Benefits

- Single cloud portal & database
- Rapid configuration with templates
- Quick time to value
- Combines the best of CPM & BI

### Solver Apps

- Process automation
- KPIs & alerts
- Dashboards
- Reporting & consolidation
- Budgeting & forecasting
- Intelligent Data Warehouse
- Marketplace with templates
- Data source connectors

# Reporting Keys

- Excel-Driven Template Design
- Ad Hoc Reporting
- Data Warehouse
- Security-Driven
- Drilldown

# Reporting – Profit & Loss

## PROFIT & LOSS

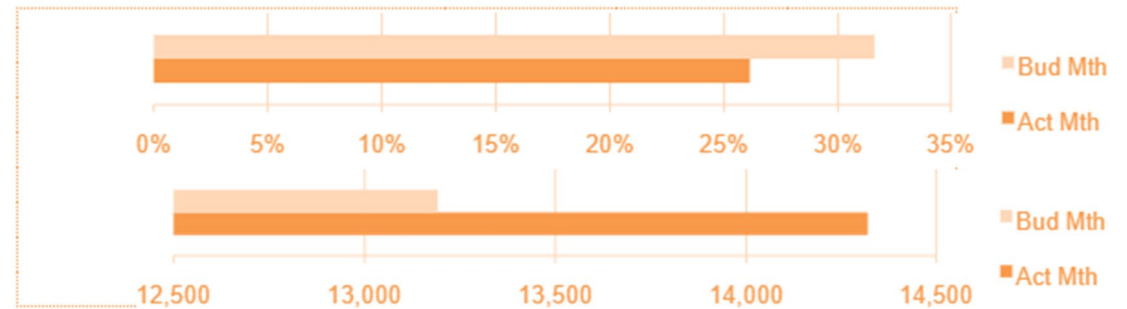
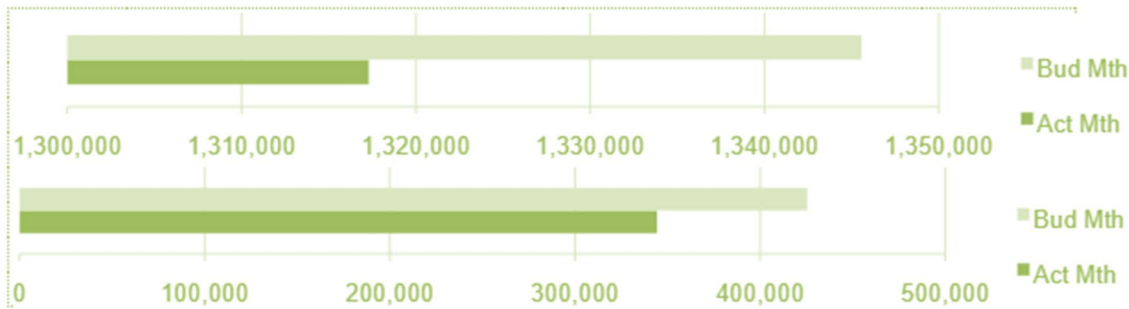
Manufacturing Demo



March, 2021

<b>Revenues</b>	<b>\$</b>	<b>1,317,295</b>	1,345,574
<b>Profit</b>	<b>\$</b>	<b>344,266</b>	425,463

<b>Profit Margin</b>	<b>26.1%</b>	31.6%
<b>Revenue/Employee</b>	<b>\$14,318</b>	13,192



	Act Mth	Act Mth LY	Var	Var %	Bud Mth	Var %	Act Ytd CY	Act Ytd LY	Variance
<b>Revenue</b>									
40010 Original Iceee Revenue	782,411	659,566	122,846	18.6%	760,472	2.8%	2,414,004	1,971,775	442,229
40020 Fruit and Cream Revenue	417,447	378,885	38,562	10.2%	487,687	-16.8%	1,251,049	1,109,726	141,323
40030 Ice Cream Revenue	79,133	69,608	9,524	13.7%	59,578	24.7%	239,402	219,876	19,526
40040 Flavor Fuzion Revenue	38,304	39,517	(1,214)	-3.1%	37,837	1.2%	116,078	108,776	7,303
<b>Total Revenue</b>	<b>1,317,295</b>	<b>1,147,576</b>	<b>169,718</b>	<b>14.8%</b>	<b>1,345,574</b>	<b>-2.1%</b>	<b>4,020,534</b>	<b>3,410,153</b>	<b>610,381</b>



# Reporting – Open Orders

## MFG12 - Open Orders

Solver Global



Report End: September 30, 2021

Plant: 100

Entity: SUS

Item (Product)	Scenario	Qty on Hand	On Customer Orders	Qty Available	Backlog Qty	Quality %
102 Barley	ACT	98	78	20	10	99.3
	PRDFCST	98	78	20	10	99.3
	Variance	0	0	0	0	0.0

### Berry Blast



■ Qty on Hand   
 ■ On Customer Orders   
 ■ Qty Available   
 ■ Backlog Qty

126 Canola	ACT	107	64	43	11	99.3
	PRDFCST	107	64	43	11	99.3
	Variance	0	0	0	0	0.0

# Reporting – Materials Usage

## MFG14 - Materials Usage Variance

Solver Global

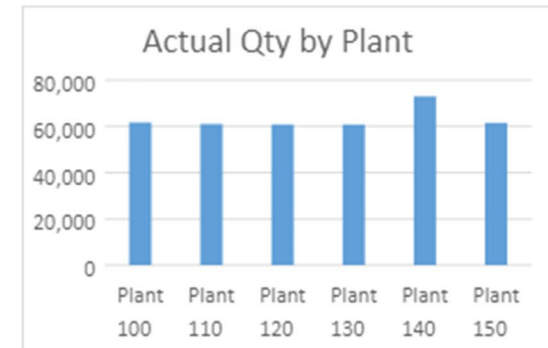


Report End: January 31, 2021

Plant: ALL Plants

Entity: SUS

Plant Summary		Standard Cost	Actual Cost	Price Var	Standard Qty (kg)	Actual Qty (kg)	Qty Var	Var %
Plant 100	Los Angeles	\$14,500	\$14,610	\$110	60,500	61,732	1,232	2.0%
Plant 110	Portland	\$14,400	\$14,616	\$216	60,500	61,048	548	0.9%
Plant 120	Boise	\$14,400	\$14,639	\$239	60,500	60,850	350	0.6%
Plant 130	Reno	\$14,400	\$14,470	\$70	60,500	60,830	330	0.5%
Plant 140	Dallas	\$17,380	\$17,509	\$129	72,600	73,035	435	0.6%
Plant 150	Kansas City	\$15,100	\$15,204	\$104	61,000	61,566	566	0.9%



Materials Usage		Standard Cost	Actual Cost	Price Var	Standard Qty (kg)	Actual Qty (kg)	Qty Var	Var %
Plant 100								

# Reporting – Sales by Customer



## Sales by Customer Report

Variance by Product Class

Period: September, 2021



Region	Customer Name	Water				Juices				Soft Drinks						
		September, 2021				September, 2021				September, 2021						
		Actual	Last Year	Var (%)	Variance	Actual	Last Year	Var (%)	Variance	Actual	Last Year	Var (%)	Variance			
<b>International</b>																
	Aaron Fitz Electrical	1,855,428	1,724,933	▲	8%	130,495	1,214,753	1,131,012	▲	7%	83,741	558,744	691,617	▼	(19%)	(132,872)
	Astor Suites	403,560	360,025	▲	12%	43,535	258,177	236,337	▲	9%	21,840	123,313	145,664	▼	(15%)	(22,351)
	Franchise Office Machines	2,037,296	1,641,008	▲	24%	396,288	1,281,023	1,080,882	▲	19%	200,140	643,209	673,754	▼	(5%)	(30,546)
	Greenway Foods	931,140	799,159	▲	17%	131,981	576,312	513,893	▲	12%	62,419	282,207	319,757	▼	(12%)	(37,550)
	Kelly Consulting	1,277,735	1,088,285	▲	17%	189,450	835,464	725,657	▲	15%	109,806	393,318	446,425	▼	(12%)	(53,107)
	Mahler State University	2,080,318	1,875,620	▲	11%	204,698	1,350,967	1,232,602	▲	10%	118,365	626,892	747,580	▼	(16%)	(120,687)
	Northern Family Hospital	2,290,953	2,298,404	■	(0%)	(7,451)	1,462,966	1,494,306	■	(2%)	(31,339)	701,610	960,683	▼	(27%)	(259,073)
	S & S Properties	1,830,147	1,985,751	▼	(8%)	(155,604)	1,163,995	1,282,708	▼	(9%)	(118,713)	549,411	815,309	▼	(33%)	(265,899)
<b>North America</b>																
	Boston University	1,821,833	1,664,965	▲	9%	156,868	1,156,267	1,079,591	▲	7%	76,676	543,638	661,218	▼	(18%)	(117,580)
	Boyles Country Inns	1,015,830	948,407	▲	7%	67,423	660,431	621,332	▲	6%	39,099	305,395	375,346	▼	(19%)	(69,951)
	Center Suite Hotel	1,821,833	1,978,952	▼	(8%)	(157,119)	1,156,267	1,277,356	▼	(9%)	(121,088)	543,638	810,798	▼	(33%)	(267,161)
	Continental Properties	2,013,196	1,625,771	▲	24%	387,425	1,262,068	1,071,484	▲	18%	190,584	642,460	676,175	▼	(5%)	(33,715)
	Plaza One	1,204,401	1,089,748	▲	11%	114,653	777,445	715,664	▲	9%	61,781	363,452	437,768	▼	(17%)	(74,316)
	St. Marys Hospital	1,335,349	1,598,046	▼	(16%)	(262,698)	864,632	1,052,517	▼	(18%)	(187,884)	403,596	655,773	▼	(38%)	(252,177)
	<b>Total Revenue</b>	<b>21,919,017</b>	<b>20,679,074</b>	<b>▲</b>	<b>6%</b>	<b>1,239,943</b>	<b>14,020,767</b>	<b>13,515,340</b>	<b>■</b>	<b>4%</b>	<b>505,427</b>	<b>6,680,882</b>	<b>8,417,866</b>	<b>▼</b>	<b>(21%)</b>	<b>(1,736,983)</b>





**FORVIS**

# Planning

---

**FORV/S**

FORVIS is a trademark of FORVIS, LLP, registered with the U.S. Patent and Trademark Office.



# Planning Keys

- Excel-Driven Template Design
- Comparative Data
- Security-Driven
- Multiple Areas
- Online Usage

# Planning – Labor Forecast



## MFG11 - Labor Forecast by Employee

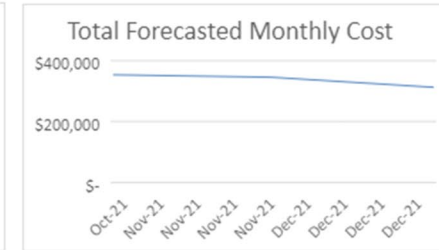
Solver Global

Report End: September 30, 2021

Plant: Plant 150

Entity: SUS

Scenario: PRDFCST



Employee	CY Salary	Monthly	Jan-21	Feb-21	Mar-21	Apr-21	May-21	Jun-21	Jul-21	Aug-21	Sep-21	Oct-21	Nov-21	Dec-21	Actual + Forecast
Employee															
1004 Justin Posada	\$ 188,480	\$ 15,707	\$ 15,840	\$ 15,840	\$ 15,840	\$ 15,840	\$ 15,840	\$ 15,840	\$ 15,523	\$ 15,682	\$ 15,365	50,948	50,948	50,948	\$ 294,455
1005 Eric Suzuki	\$ 153,140	\$ 12,762	\$ 12,870	\$ 12,870	\$ 12,870	\$ 12,870	\$ 12,870	\$ 12,870	\$ 12,613	\$ 12,741	\$ 12,484	31,021	30,021	17,021	\$ 193,120
1006 Chris Molina	\$ 144,694	\$ 12,058	\$ 12,160	\$ 12,160	\$ 12,160	\$ 12,160	\$ 12,160	\$ 12,160	\$ 11,917	\$ 12,039	\$ 11,795	28,082	16,082	16,082	\$ 168,957
1015 Orlando Iannetta	\$ 159,030	\$ 13,253	\$ 13,098	\$ 13,231	\$ 12,964	\$ 13,365	\$ 13,365	\$ 13,365	\$ 13,365	\$ 13,365	\$ 13,365	17,675	37,675	17,675	\$ 192,509
1209 Clay Cust	\$ 188,480	\$ 15,707	\$ 15,840	\$ 15,840	\$ 15,840	\$ 15,840	\$ 15,840	\$ 15,840	\$ 15,523	\$ 15,682	\$ 15,365	35,948	20,948	20,948	\$ 219,455
1210 Kevin Stubbs	\$ 153,140	\$ 12,762	\$ 12,870	\$ 12,870	\$ 12,870	\$ 12,870	\$ 12,870	\$ 12,870	\$ 12,613	\$ 12,741	\$ 12,484	17,021	17,021	17,021	\$ 166,120
1211 Jorge Rowand	\$ 144,694	\$ 12,058	\$ 12,160	\$ 12,160	\$ 12,160	\$ 12,160	\$ 12,160	\$ 12,160	\$ 11,917	\$ 12,039	\$ 11,795	16,082	16,082	16,082	\$ 156,957
1212 Joe Hafner	\$ 159,030	\$ 13,253	\$ 13,098	\$ 13,231	\$ 12,964	\$ 13,365	\$ 13,365	\$ 13,365	\$ 13,365	\$ 13,365	\$ 13,365	17,675	17,675	17,675	\$ 172,509
1213 Johnny Sweeney	\$ 159,030	\$ 13,253	\$ 13,098	\$ 13,231	\$ 12,964	\$ 13,365	\$ 13,365	\$ 13,365	\$ 13,365	\$ 13,365	\$ 13,365	17,675	17,675	17,675	\$ 172,509
1219 Neftali Crisp	\$ 159,030	\$ 13,253	\$ 13,098	\$ 13,231	\$ 12,964	\$ 13,365	\$ 13,365	\$ 13,365	\$ 13,365	\$ 13,365	\$ 13,365	17,675	17,675	17,675	\$ 172,509
1220 Joba Brantley	\$ 188,480	\$ 15,707	\$ 15,840	\$ 15,840	\$ 15,840	\$ 15,840	\$ 15,840	\$ 15,840	\$ 15,523	\$ 15,682	\$ 15,365	20,948	20,948	20,948	\$ 204,455
1313 Jeremy Zito	\$ 153,140	\$ 12,762	\$ 12,870	\$ 12,870	\$ 12,870	\$ 12,870	\$ 12,870	\$ 12,870	\$ 12,613	\$ 12,741	\$ 12,484	17,021	17,021	17,021	\$ 166,120
1360 Brian Morton	\$ 144,694	\$ 12,058	\$ 12,160	\$ 12,160	\$ 12,160	\$ 12,160	\$ 12,160	\$ 12,160	\$ 11,917	\$ 12,039	\$ 11,795	16,082	16,082	16,082	\$ 156,957
1361 Rafael Stammen	\$ 159,030	\$ 13,253	\$ 13,098	\$ 13,231	\$ 12,964	\$ 13,365	\$ 13,365	\$ 13,365	\$ 13,365	\$ 13,365	\$ 13,365	17,675	17,675	17,675	\$ 172,509
1366 Jorge Narveson	\$ 144,694	\$ 12,058	\$ 12,160	\$ 12,160	\$ 12,160	\$ 12,160	\$ 12,160	\$ 12,160	\$ 11,917	\$ 12,039	\$ 11,795	16,082	16,082	16,082	\$ 156,957
1367 Kurt Stults	\$ 144,694	\$ 12,058	\$ 12,160	\$ 12,160	\$ 12,160	\$ 12,160	\$ 12,160	\$ 12,160	\$ 11,917	\$ 12,039	\$ 11,795	16,082	16,082	16,082	\$ 156,957
<b>Total</b>	<b>\$ 2,543,479</b>	<b>\$ 211,957</b>	<b>\$ 212,419</b>	<b>\$ 213,088</b>	<b>\$ 211,751</b>	<b>\$ 213,756</b>	<b>\$ 213,756</b>	<b>\$ 213,756</b>	<b>\$ 210,817</b>	<b>\$ 212,287</b>	<b>\$ 209,348</b>	<b>\$ 353,692</b>	<b>\$ 345,692</b>	<b>\$ 312,692</b>	<b>\$ 2,923,054</b>
Add to Employees with No History															

# Planning – Production Forecast

## solver MFG20 - Production Forecast by Plant

Solver Global

Report End: September 30, 2021

Plant: 100

Entity: SUS

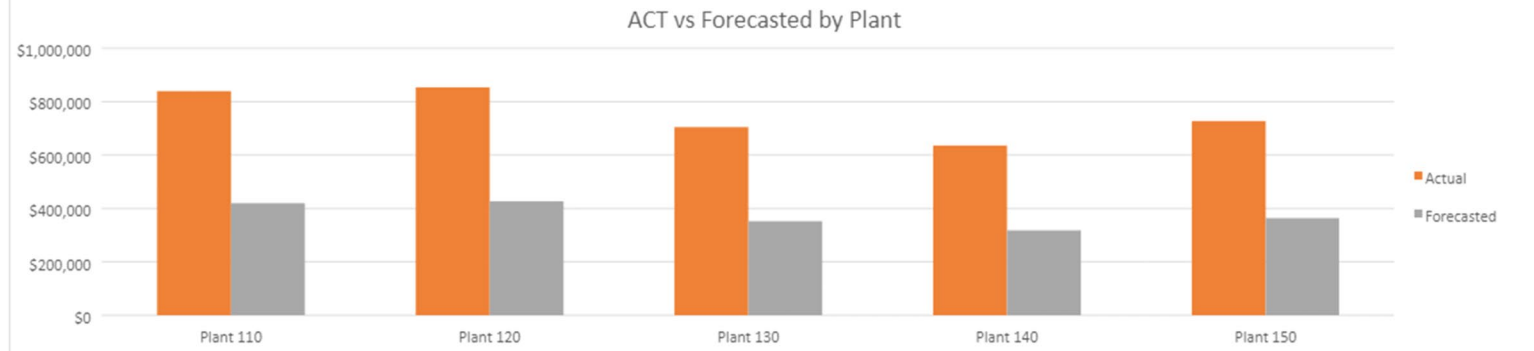
Scenario: PRDFCST

Select Neg/Pos Rate for estimate of Remaining Prds LY YR

Rate Table		
Rate 1	-3%	3%
Rate 2	-5%	5%
Rate 3	-7%	7%
Select:	-3%	

Location
Los Angeles

Summary				
Plant	Actual	Forecasted	Var	Var %
Plant 100	\$877,600	\$438,800	\$438,800	50.0%
Plant 110	\$839,196	\$419,598	\$419,598	50.0%
Plant 120	\$853,236	\$426,618	\$426,618	50.0%
Plant 130	\$704,400	\$352,200	\$352,200	50.0%
Plant 140	\$635,536	\$317,768	\$317,768	50.0%
Plant 150	\$727,164	\$363,582	\$363,582	50.0%



Item (Product)		Current Fiscal Year												PY x Rate (Copy/Paste)			
		Jan-21	Feb-21	Mar-21	Apr-21	May-21	Jun-21	Jul-21	Aug-21	Sep-21	Oct-21	Nov-21	Dec-21	Oct-20	Nov-20	Dec-20	
Grain	102	Barley	\$21,000	\$20,650	\$21,434	\$21,969	\$23,076	\$21,600	\$19,350	\$19,500	\$19,450	\$19,700	\$21,500	\$15,850	\$20,564	\$20,855	\$20,807
Grain	126	Canola	\$21,108	\$21,112	\$20,123	\$18,987	\$20,700	\$19,309	\$20,821	\$21,988	\$22,269	\$22,391	\$22,357	\$21,244	\$21,428	\$21,298	\$19,928
Grain	194	Safflower	\$26,834	\$26,729	\$27,352	\$27,428	\$27,704	\$28,128	\$27,312	\$27,530	\$26,772	\$28,590	\$26,688	\$26,470	\$27,490	\$25,887	\$25,676
Grain	287	Wheat	\$5,350	\$5,150	\$5,125	\$5,936	\$5,638	\$4,683	\$4,596	\$4,968	\$5,294	\$5,340	\$5,683	\$4,995	\$5,180	\$5,513	\$4,845
Original Iceee	290	Sweet Monster	\$4,806	\$4,050	\$4,204	\$4,368	\$4,290	\$4,650	\$4,560	\$4,900	\$5,240	\$4,953	\$5,380	\$5,500	\$4,804	\$5,219	\$5,335
Original Iceee	313	Tutti Frutti	\$25,818	\$24,830	\$23,454	\$23,366	\$23,860	\$24,854	\$26,730	\$28,100	\$27,812	\$26,718	\$26,624	\$25,642	\$25,916	\$25,825	\$24,873
Original Iceee	355	Cola Star	\$5,000	\$4,900	\$4,700	\$4,750	\$5,600	\$5,903	\$6,100	\$6,300	\$5,740	\$6,240	\$5,673	\$5,892	\$6,053	\$5,503	\$5,715
Fruit & Cream Bars	411	Coconut Cream	\$4,900	\$4,950	\$5,500	\$5,400	\$5,900	\$5,000	\$4,700	\$4,900	\$5,500	\$5,900	\$6,000	\$5,900	\$5,723	\$5,820	\$5,723
Fruit & Cream Bars	480	Orange Cream	\$26,634	\$26,729	\$27,352	\$27,428	\$27,704	\$28,128	\$27,312	\$27,530	\$26,772	\$28,340	\$26,688	\$26,470	\$27,490	\$25,887	\$25,676
Fruit & Cream Bars	532	Strawberry Cream	\$5,734	\$5,640	\$5,452	\$6,500	\$5,900	\$4,700	\$4,300	\$4,600	\$5,000	\$5,200	\$5,300	\$4,700	\$5,044	\$5,141	\$4,559
Ice Cream Bars	590	Caramel Swirl	\$4,500	\$4,100	\$3,900	\$4,000	\$4,100	\$4,500	\$5,000	\$4,800	\$4,700	\$4,600	\$5,500	\$5,300	\$4,462	\$5,335	\$5,141
Ice Cream Bars	603	Fudge Swirl	\$30,906	\$31,218	\$31,436	\$26,800	\$28,230	\$25,812	\$26,224	\$27,336	\$28,548	\$29,154	\$30,066	\$27,436	\$28,279	\$29,164	\$26,613
Ice Cream Bars	688	Strawberry Swirl	\$25,718	\$24,830	\$23,454	\$23,366	\$23,860	\$24,854	\$26,730	\$28,100	\$27,612	\$26,718	\$26,624	\$25,642	\$25,916	\$25,825	\$24,873
Ice Cream Bars	795	Coffee Swirl	\$27,400	\$25,950	\$27,134	\$27,769	\$28,576	\$27,000	\$25,050	\$24,500	\$23,950	\$26,350	\$25,500	\$26,050	\$25,560	\$24,735	\$25,269
Ice Cream Bars	885	Lemon Swirl	\$26,081	\$25,592	\$24,517	\$23,474	\$24,330	\$24,620	\$26,166	\$27,912	\$27,886	\$27,036	\$26,280	\$25,024	\$26,225	\$25,492	\$24,273
<b>Total:</b>			<b>\$261,789</b>	<b>\$256,430</b>	<b>\$255,137</b>	<b>\$251,541</b>	<b>\$259,468</b>	<b>\$253,741</b>	<b>\$254,951</b>	<b>\$262,964</b>	<b>\$262,545</b>	<b>\$267,230</b>	<b>\$265,863</b>	<b>\$252,115</b>	<b>\$260,135</b>	<b>\$257,499</b>	<b>\$249,305</b>

# Planning – Cash Flow Projection

**BI360** Corporate US  
Cash Flow Projection - Twelve Months

Cash Inflows	Feb-21	Mar-21	Apr-21	May-21	Jun-21	Jul-21
% Change Overall Monthly Change						
\$ Change Proceeds from Loans						
% Change Cash Sales & Collections						

Cash Outflows	Feb-21	Mar-21	Apr-21	May-21	Jun-21	Jul-21
% Change Overall Monthly Change						
% Change Payroll & Related Expense						
Monthly Amt Office Supplies						
Monthly Amt Consulting						
% Change Postage						

	Actual Jan-21	Projected Feb-21	Projected Mar-21	Projected Apr-21	Projected May-21	Projected Jun-21	Projected Jul-21
Cash at Beginning of Period	\$ 700,980	\$ 230,864	\$ (239,252)	\$ (709,368)	\$ (1,179,483)	\$ (1,649,599)	\$ (2,119,715)
<b>Cash Inflows:</b>							
Cash Sales & Collections	(68,603)	(68,603)	(68,603)	(68,603)	(68,603)	(68,603)	(68,603)
Proceeds from Loans	16,611	16,611	16,611	16,611	16,611	16,611	16,611
<b>Total Cash Inflows</b>	<b>(51,992)</b>	<b>(51,992)</b>	<b>(51,992)</b>	<b>(51,992)</b>	<b>(51,992)</b>	<b>(51,992)</b>	<b>(51,992)</b>
<b>Available Cash Balance</b>	<b>648,988</b>	<b>178,872</b>	<b>(291,244)</b>	<b>(761,360)</b>	<b>(1,231,476)</b>	<b>(1,701,591)</b>	<b>(2,171,707)</b>





**FORVIS**



# Dashboards

---

**FORV/S**

FORVIS is a trademark of FORVIS, LLP, registered with the U.S. Patent and Trademark Office.

# Dashboard Keys

- Excel & Power BI
- Consistent Data Model
- One Source of Truth

# Dashboard – Executive Summary

## Executive Summary

Manufacturing Demo

Year: All

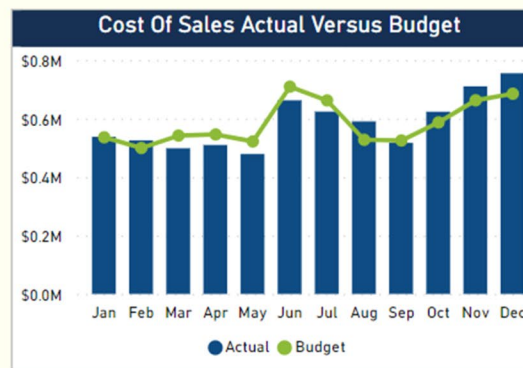
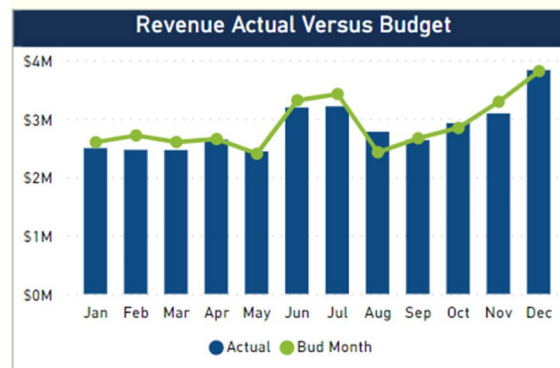
2020

2021

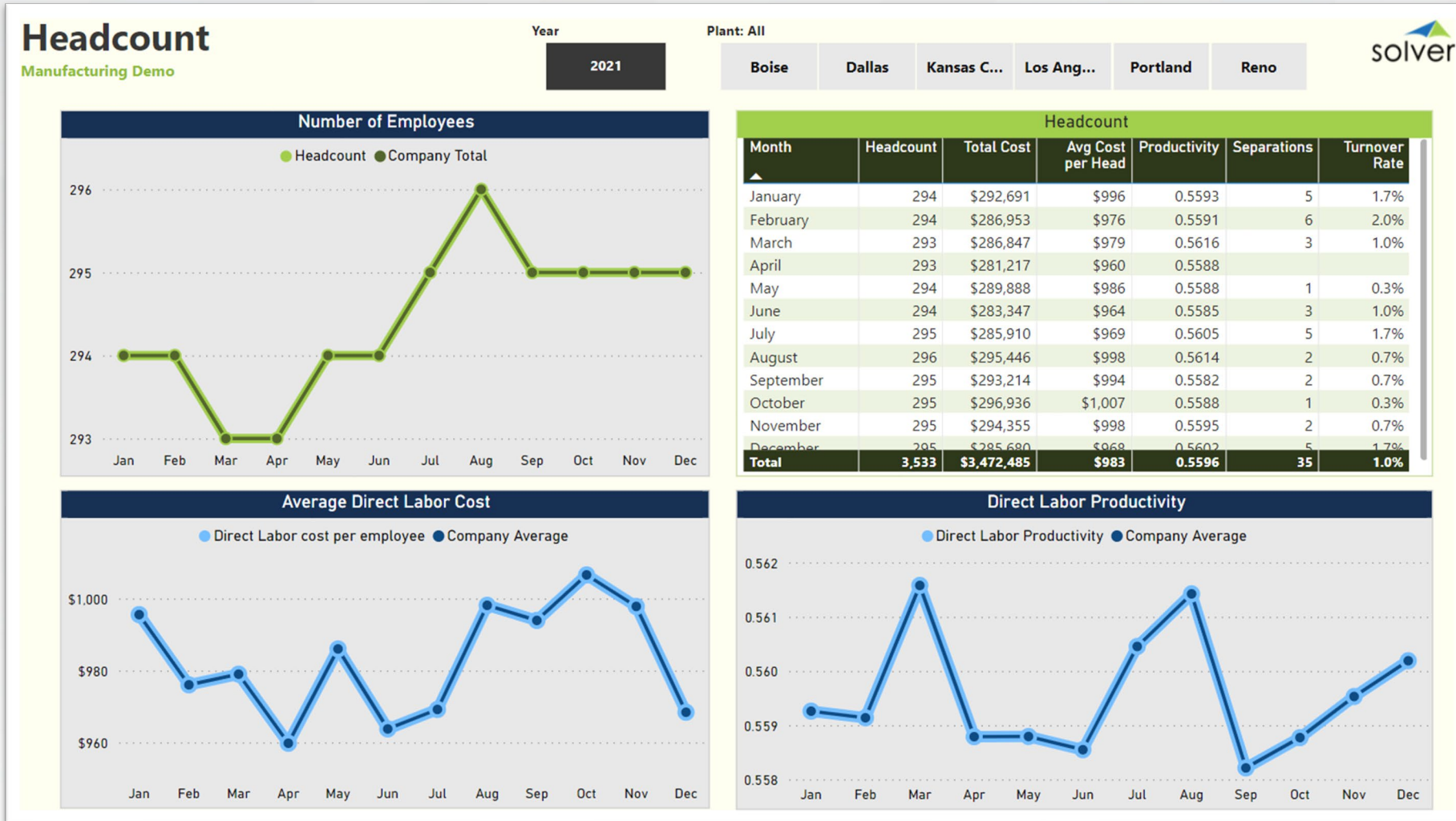


Revenue				
Month	Actual	Budget	Var %	Diff
January	\$2,497K	\$2,598K	-4%	(\$101K)
February	\$2,469K	\$2,714K	-9%	(\$245K)
March	\$2,465K	\$2,601K	-5%	(\$137K)
April	\$2,642K	\$2,652K	-0%	(\$10K)
May	\$2,441K	\$2,401K	2%	\$40K
June	\$3,190K	\$3,313K	-4%	(\$123K)
July	\$3,210K	\$3,420K	-6%	(\$210K)
August	\$2,777K	\$2,427K	14%	\$350K
September	\$2,635K	\$2,665K	-1%	(\$31K)
October	\$2,924K	\$2,842K	3%	\$82K
November	\$3,090K	\$3,288K	-6%	(\$198K)
December	\$3,829K	\$3,811K	0%	\$18K
<b>Total</b>	<b>\$34,168K</b>	<b>\$34,733K</b>	<b>-2%</b>	<b>(\$565K)</b>

Cost Of Sales				
Month	Actual	Budget	Var %	Diff
January	\$538K	\$536K	0%	\$2K
February	\$526K	\$500K	5%	\$26K
March	\$499K	\$542K	-8%	(\$43K)
April	\$510K	\$546K	-7%	(\$36K)
May	\$479K	\$522K	-8%	(\$43K)
June	\$663K	\$709K	-7%	(\$47K)
July	\$624K	\$662K	-6%	(\$38K)
August	\$591K	\$528K	12%	\$63K
September	\$517K	\$526K	-2%	(\$8K)
October	\$624K	\$587K	6%	\$36K
November	\$710K	\$663K	7%	\$48K
December	\$755K	\$685K	10%	\$70K
<b>Total</b>	<b>\$7,036K</b>	<b>\$7,006K</b>	<b>0%</b>	<b>\$30K</b>



# Dashboard – Headcount







**FORVIS**

# What's Next

Thursday, April 25



**FORV/S**

**WEBINAR**

## The Great Data Aggregator in the Sky: Solver Data Warehouse

Thursday, April 25 • 10-11 a.m. ET

**FORV/S**



# Questions?

---

**FORV/S**

FORVIS is a trademark of FORVIS, LLP, registered with the U.S. Patent and Trademark Office.

# Thank you!

[forvis.com](https://forvis.com)

The information set forth in this presentation contains the analysis and conclusions of the author(s) based upon his/her/their research and analysis of industry information and legal authorities. Such analysis and conclusions should not be deemed opinions or conclusions by FORVIS or the author(s) as to any individual situation as situations are fact specific. The reader should perform its own analysis and form its own conclusions regarding any specific situation. Further, the author(s) conclusions may be revised without notice with or without changes in industry information and legal authorities.

FORVIS is a trademark of FORVIS, LLP, registered with the U.S. Patent and Trademark Office. © 2023 FORVIS, LLP. All rights reserved.

# FORVIS

Assurance / Tax / Consulting